

SALT.

NORTH COAST

Tatweeer^{MISR}

CREATING DESTINATIONS

Since its inception in 2014, Tatweer Misr has strongly emerged as a leading real-estate developer in Egypt that enriches the life of its communities. Committed to design excellence, innovation and sustainability, its unique edge lies in its comprehensive solution-oriented approach spanning quality construction, landmark design and architecture, unique landscaping and an abundance of lifestyle amenities aimed at fostering the growth of its residents.

Driven by a unique vision to deliver life's most treasured experiences to every door, Tatweer Misr forms strategic partnerships with global specialists and world-acclaimed innovators. Today, Tatweer Misr is proud to boast six iconic developments that stand as true testaments of contemporary elegance and innovation across Egypt. From its first home development, Bloomfields, in the heart of Mostakbal City; its flagship, award winning project, IL Monte Galala, in Ain Sokhna; its island-inspired, award-winning development, Fouka Bay, in Ras El Hekma, to D-Bay in Dabaa, Rivers in New Zayed, to its latest development, Salt in the North Coast. Tatweer Misr has become an original trendsetter in the region, celebrated for inspiring change and building value.



INTRODUCING SALT.

A TRUE TASTE OF SUMMER JOY ALL YOURS TO SAVOR

Imagine a breezy Summer destination, soaked in the North Coast's sizzling sun where blue skies, pristine sea views, scenic pools and crystal-clear lagoons stretch out as far as you can see. Rolling out on 294.5 acres, Salt is a sunny state of mind, seasoning your vacation with infinite water-front possibilities, thanks to an ideal location on 185 km Alex-Matrouh Road, as well as a private beachfront on 850 meters, oozing with joyful experiences, above and below turquoise waters.





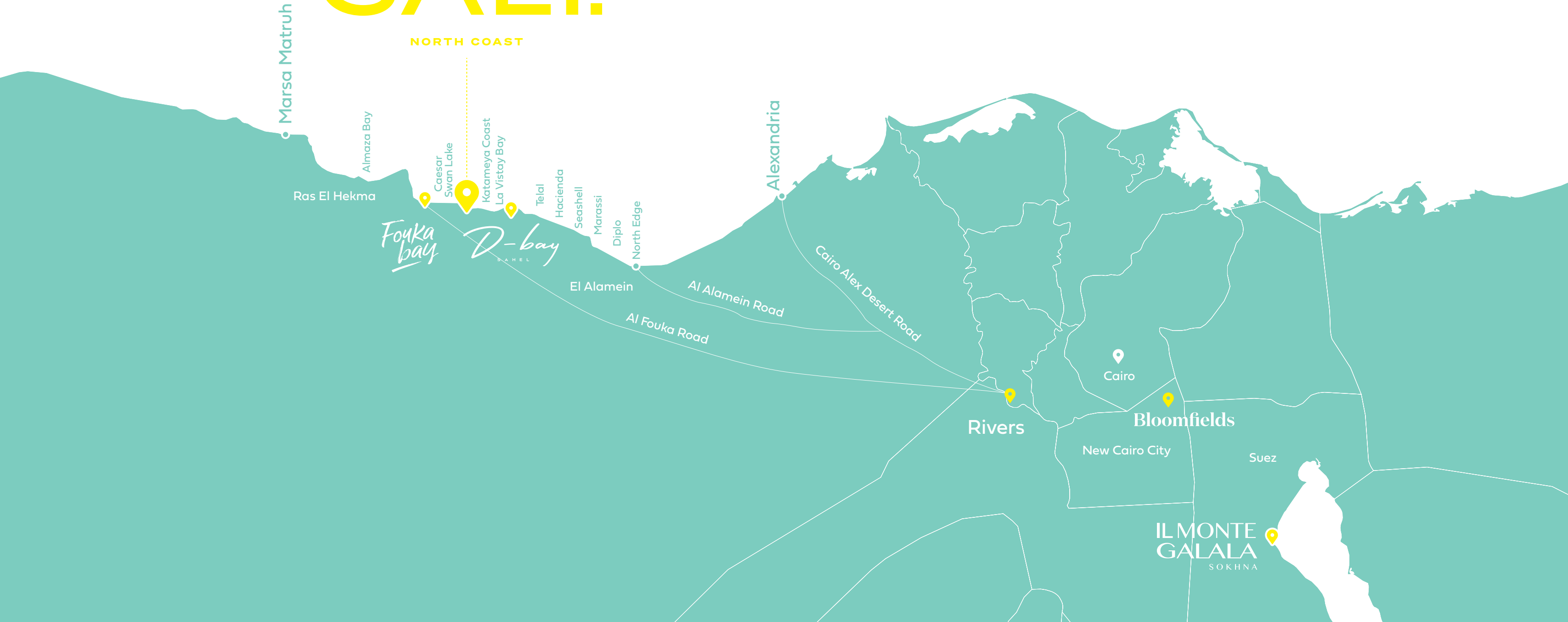
INTRODUCING SALT.

EXPERIENCE THE SALT LIFE

Salt is a world of its own, offering a world-class marina to dock your boat, a spirited commercial zone where water-front F&B concepts lap captivating views and a -5star Bungalow Hotel & Serviced apartments concept inspiring a laid-back lifestyle. Relaxation lovers are also invited to lose themselves in world-class hospitality, indulging in impeccable accommodation, soothing spa treatments and rejuvenating massages, anytime of the day. Boasting every ingredient essential to perfect memorable summer days, Salt's unrivaled host of amenities is in short, memories in the making, powered by a hand-picked community of like-minded neighbors.

SALT.

NORTH COAST



Marsa Matruh

Ras El Hekma

Almaza Bay

Foyka bay

D-bay SAHEL

Caesar Swan Lake

Katameya Coast

La Vistay Bay

Telal

Hacienda

Seashell

Marassi

Diplo

North Edge

El Alamein

Al Alamein Road

Al Fouka Road

Alexandria

Cairo Alex Desert Road

Cairo

Rivers

Bloomfields

New Cairo City

Suez

ILMONTE GALALA SOKHNA

MASTERPLAN

WATER-FRONT BEAUTY INSIDE EVERY HOME

Salt is more than just a premium summer destination on 185 km Alex-Matrouh Road. It's an all inviting experience of water-front serenity maximized. The destination is smartly built on varied elevations to take in panoramic sea, pool and lagoon views in equal measure, transforming every unit into a floating sanctuary of calm. The outdoor spaces are thoughtfully landscaped with lush pocket parks , leading all the way to a 185 km beachfront to create a coastal escape that can be easily enjoyed on foot, bike or simply from the privacy of home. Envisaged as a self-sufficient community, Salt blends the best of commercial excellence, world-class hospitality and a lively marina that sails with city troubles away, so residents can experience the finest in water-front living without having to leave their summer home.





Signature Villa



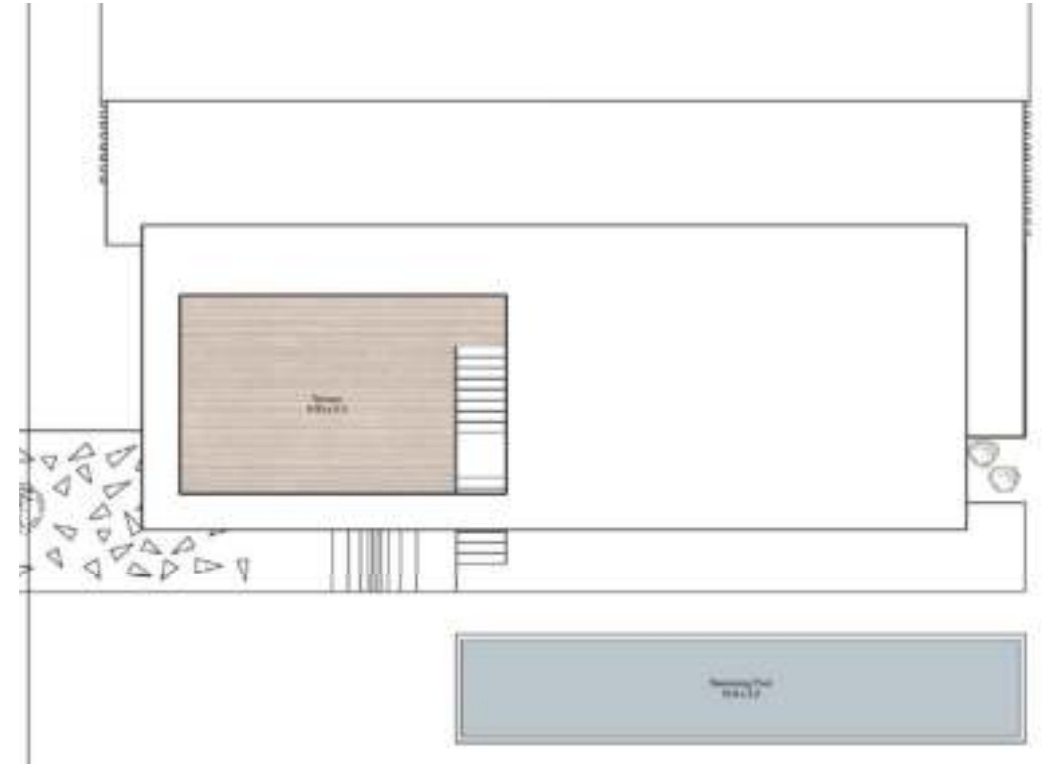
Signature Villa

5 BEDROOMS

TOTAL AREA - 350 m²



GROUND FLOOR



FIRST FLOOR

Villa 1



Villa 1

5 BEDROOMS

TOTAL AREA - 290 m²



GROUND FLOOR



FIRST FLOOR

Villa 2



Villa 2

4 BEDROOMS

TOTAL AREA - 260 m²



GROUND FLOOR



FIRST FLOOR

Villa 3



Villa 3

4 BEDROOMS

TOTAL AREA - 220 m²



GROUND FLOOR



FIRST FLOOR

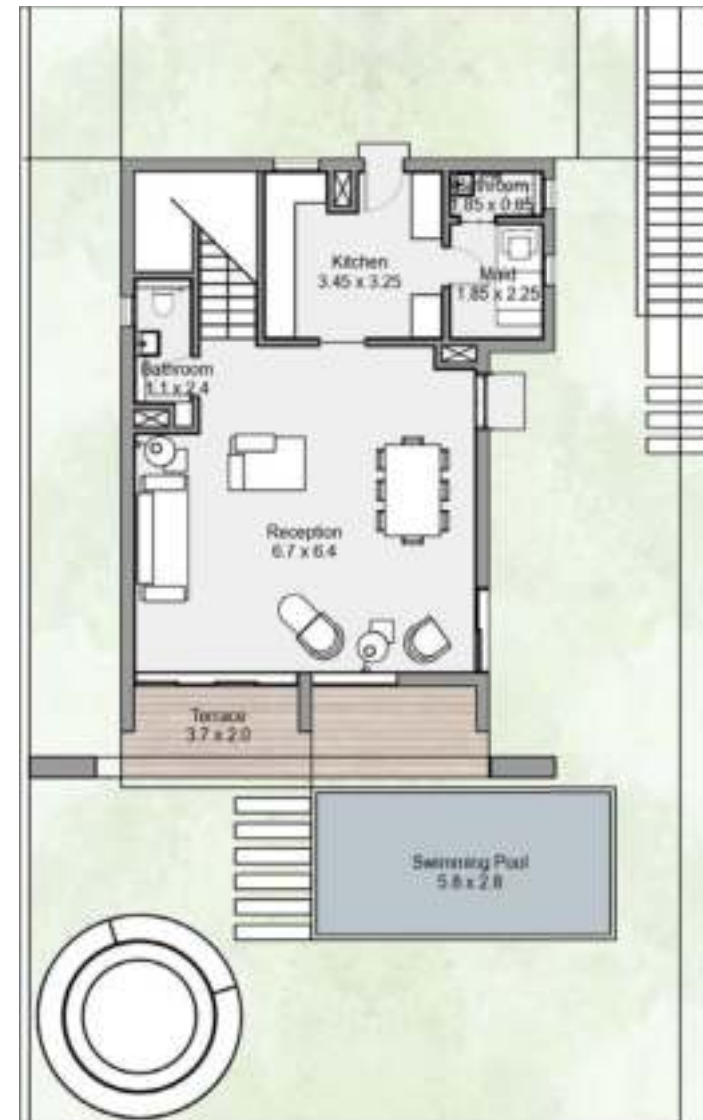
Villa 4



Villa 4

3 BEDROOMS

TOTAL AREA - 180 m²



GROUND FLOOR



FIRST FLOOR

Villa 5



Villa 5

4 BEDROOMS

TOTAL AREA - 205 m²



GROUND FLOOR



FIRST FLOOR



ROOF

Villa 6



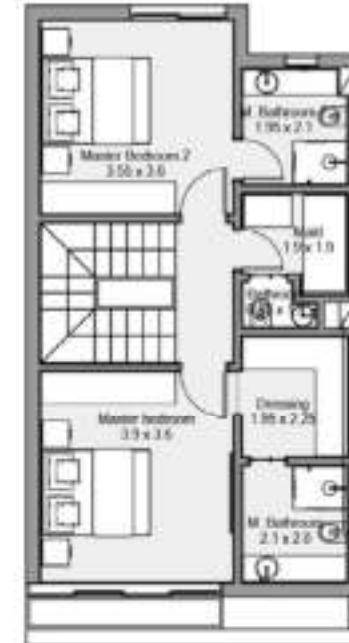
Villa 6

3 BEDROOMS

TOTAL AREA - 185 m²



GROUND FLOOR



FIRST FLOOR



ROOF

Twinhouse



Twinhouse

3 BEDROOMS

TOTAL AREA - 185 m²



GROUND FLOOR



FIRST FLOOR



SECOND FLOOR

Townhouse



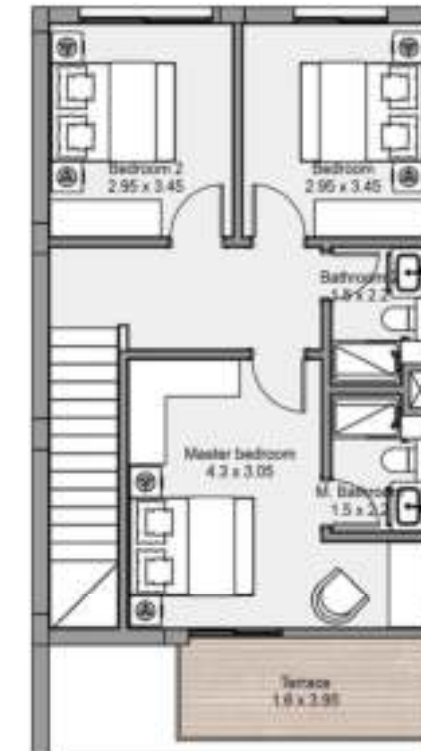
Townhouse

3 BEDROOMS

TOTAL AREA - 150 m²



GROUND FLOOR



FIRST FLOOR

Senior Chalet



Senior Chalet 3

3 BEDROOMS

TOTAL AREA - 115 m²

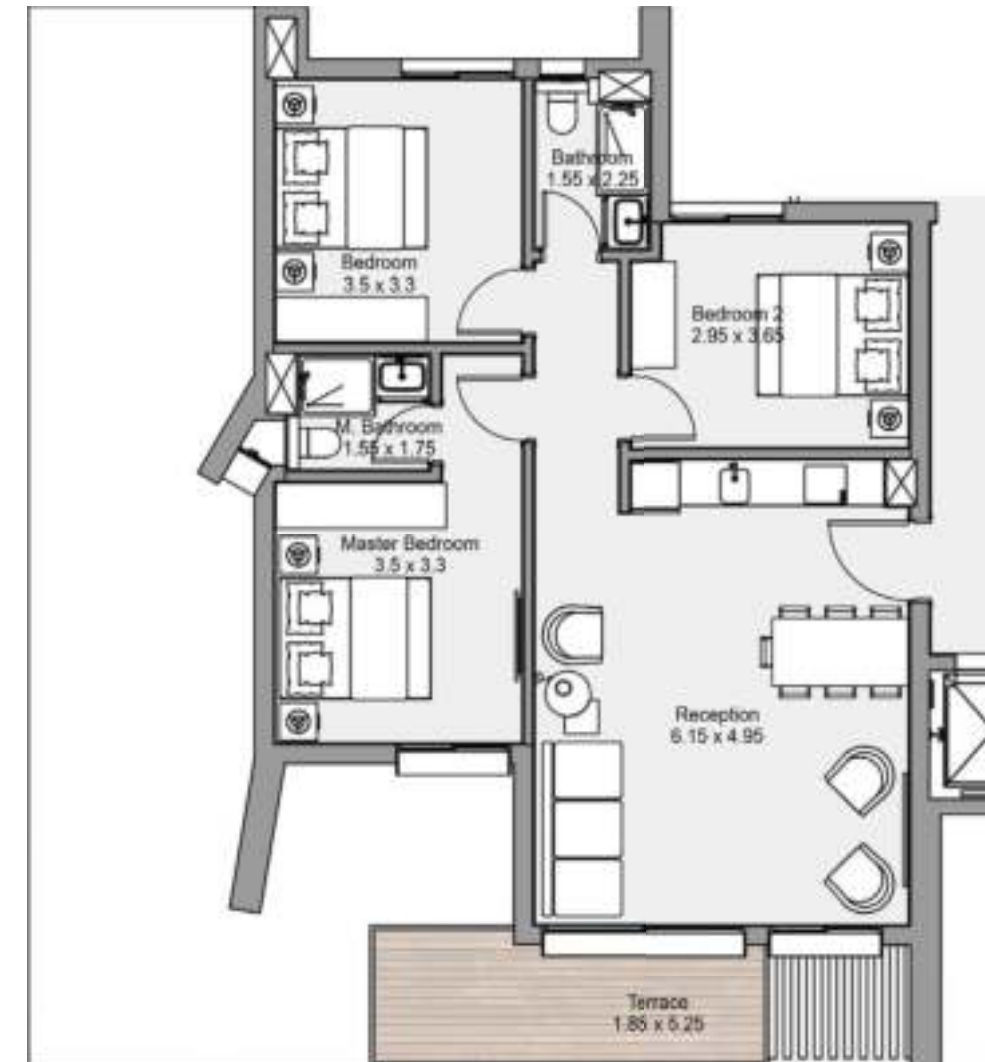


GROUND FLOOR

Senior Chalet 3

3 BEDROOMS

TOTAL AREA - 115 m²

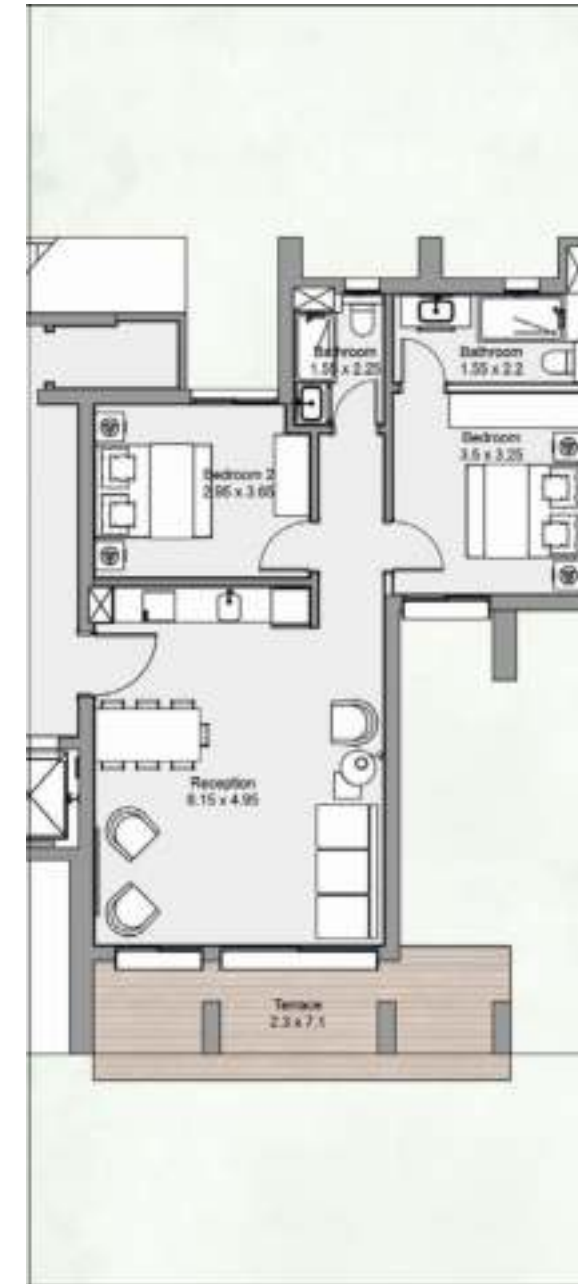


TYPICAL FLOOR

Senior Chalet 2

2 BEDROOMS

TOTAL AREA - 105 m²

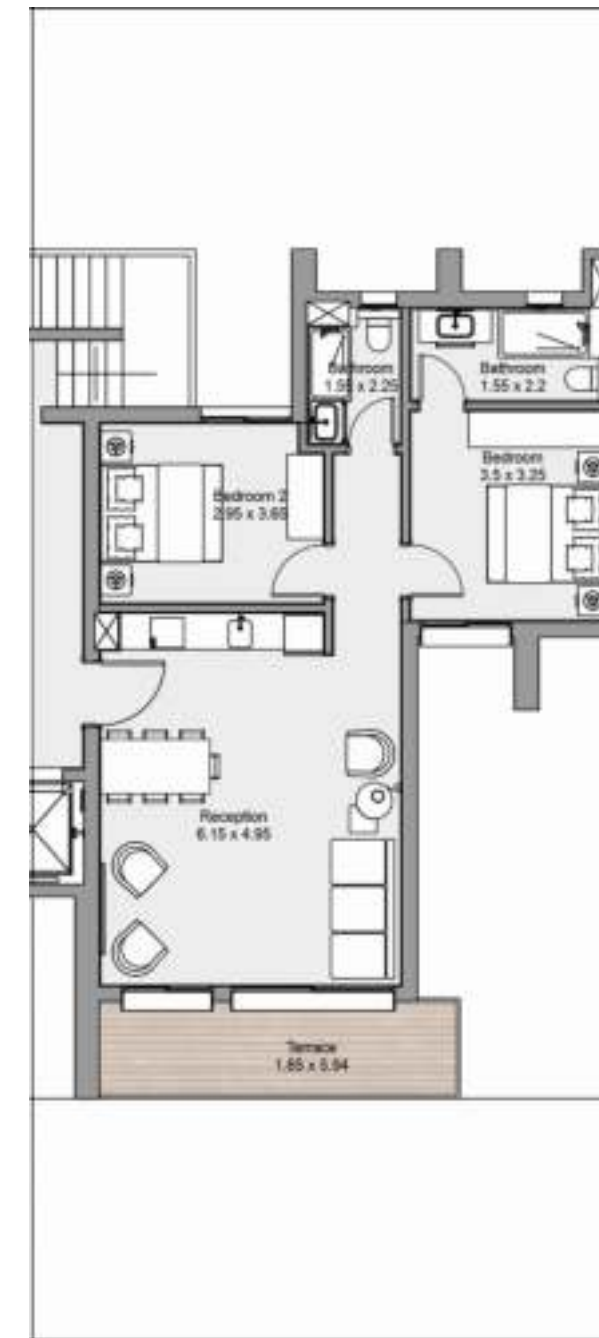


GROUND FLOOR

Senior Chalet 2

2 BEDROOMS

TOTAL AREA - 105 m²

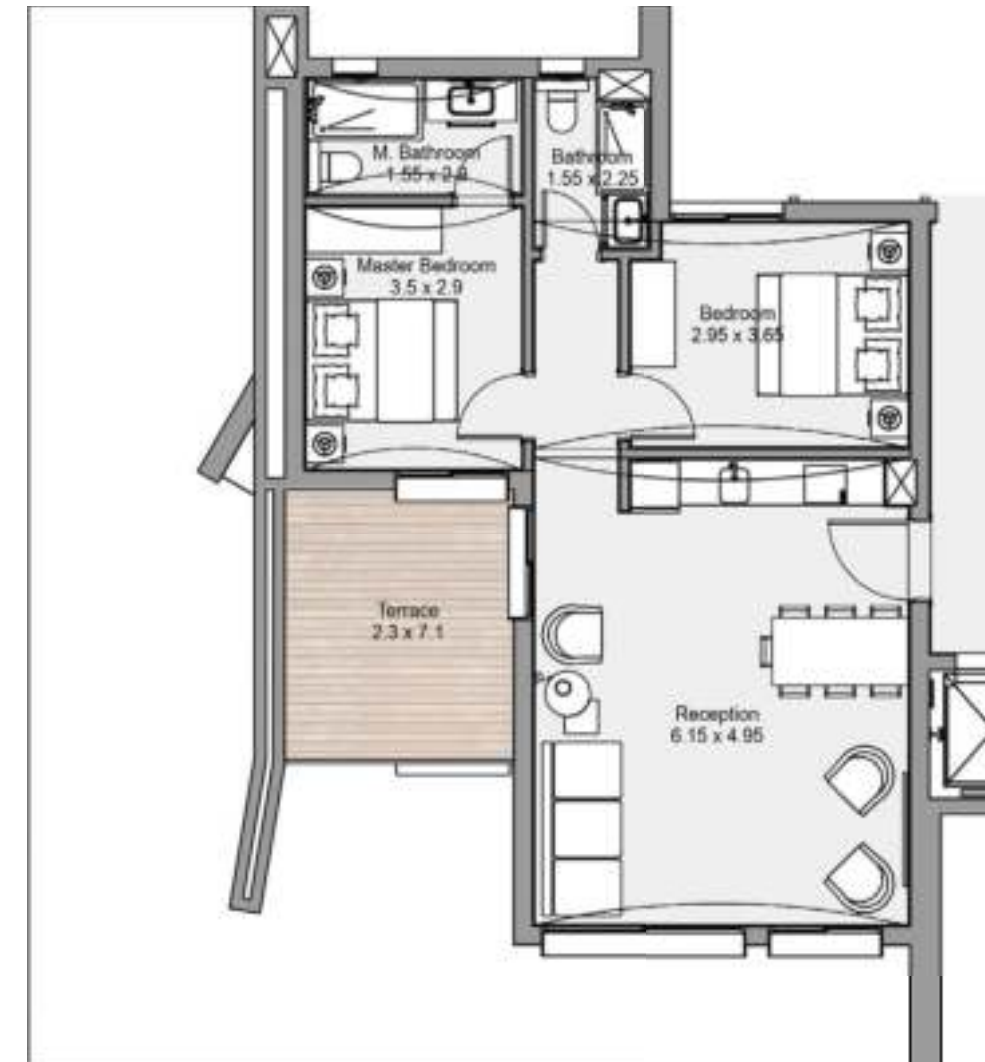


TYPICAL FLOOR

Senior Chalet 2R

2 BEDROOMS

TOTAL AREA - 105 m²



ROOF FLOOR

Senior Chalet 1

1 BEDROOM

TOTAL AREA - 80 m²



ROOF FLOOR

Chalet



Chalet 3

3 BEDROOMS

TOTAL AREA - 110 m²



GROUND FLOOR

Chalet 3

3 BEDROOMS

TOTAL AREA - 110 m²



TYPICAL FLOOR

Chalet 2

2 BEDROOMS

TOTAL AREA - 95 m²

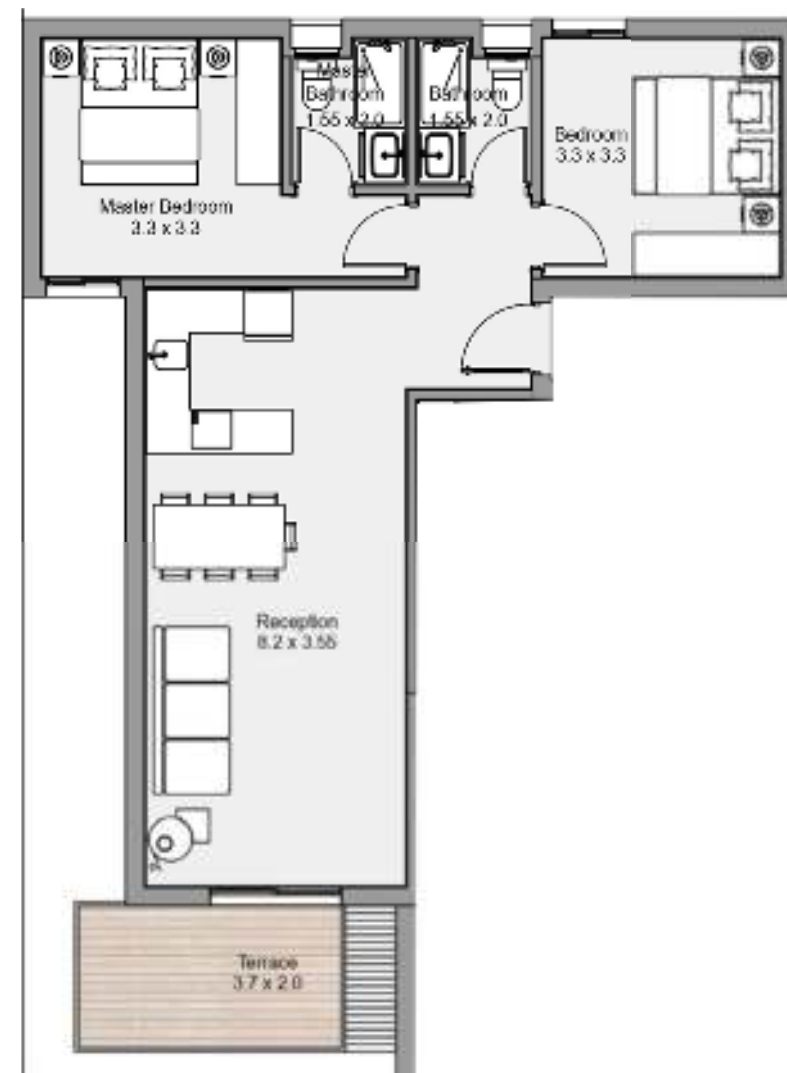


GROUND FLOOR

Chalet 2

2 BEDROOMS

TOTAL AREA - 95 m²



TYPICAL FLOOR

AMENITIES



SALT MARINA



SALT COMMERCIAL HUB



SALT LAGOON

AMENITIES



SALT.

Tatweer.^{MISR}